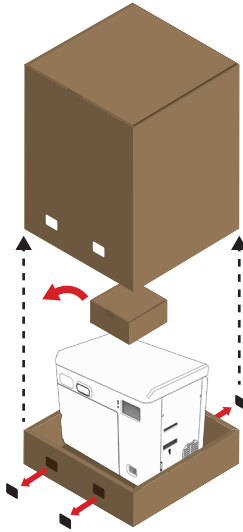


XID-M300 Quick Start Guide

1. Opening the printer box

1. Remove all 4 plastic locking clips at base
2. Carefully slide box upwards
3. Remove accessories box
4. Remove foam packing from printer and lift printer onto desk location
5. Remove plastic protective films
6. Retain and store all packing materials for future use. Any warranty returns should be sent in original packaging



2. Contents check list

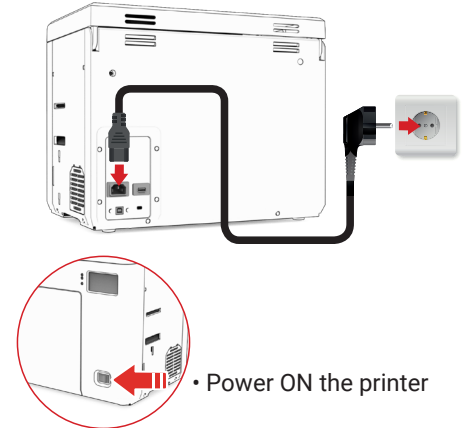
1. XID-M printer
2. Power cord
3. USB cable
4. Output hopper
5. Cleaning card
6. Cleaning swab

Please make sure that all the components and accessories are included in the box. If there are missing or damaged items, please contact your dealer for assistance.



3. Power your printer

- Connect the power cord

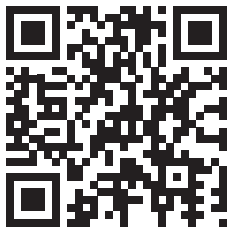


- Power ON the printer

4. Visit:

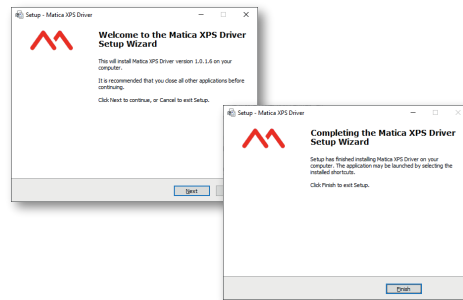
www.maticagroup.com/install

Or scan the QR code below using your computer's webcam to the installation page and follow the online instructions.



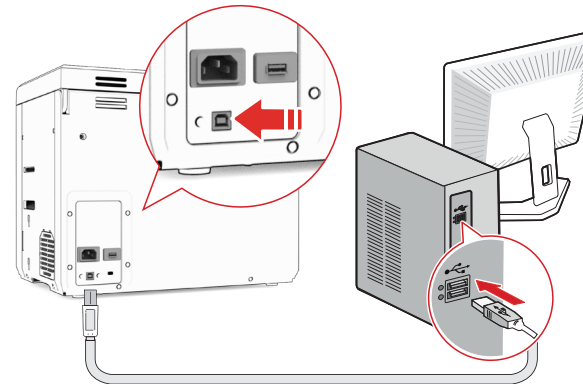
5. Download and install driver

- Follow the online step-by-step guide to download and install the printer driver.



Connect USB cable

- Connect the printer to the computer using the USB cable when instructed during driver installation.



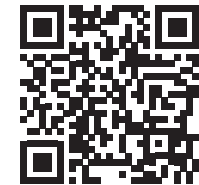
6. Register your printer:

www.maticagroup.com/register

- Validate your warranty.
- Receive notifications of driver and firmware updates.
- Gain easy access to support.

Register: via mobile

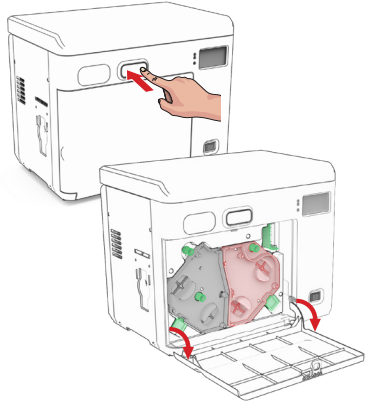
- Scan the QR code to the registration page and follow the online instructions.



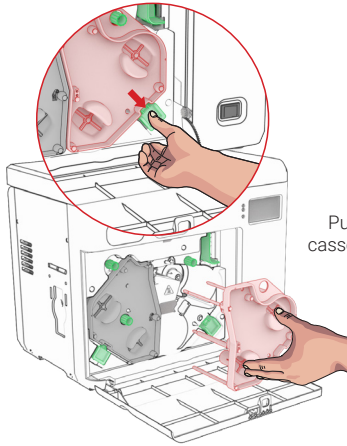
XID-M300 Quick Start Guide

7. Installing the color ribbon and retransfer film into your printer

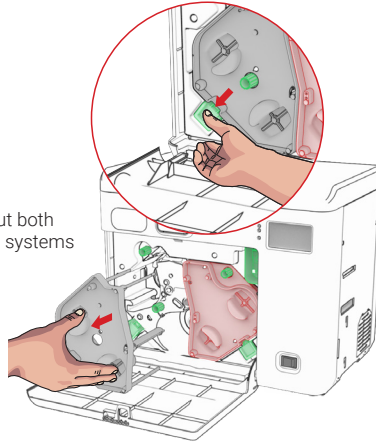
Open printer



Release the color ribbon cassette (red)

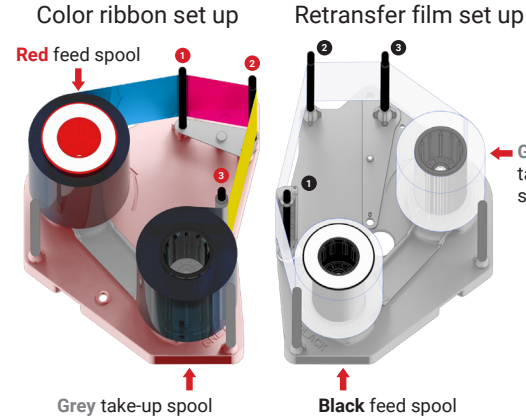


Release the RT film cassette (black)



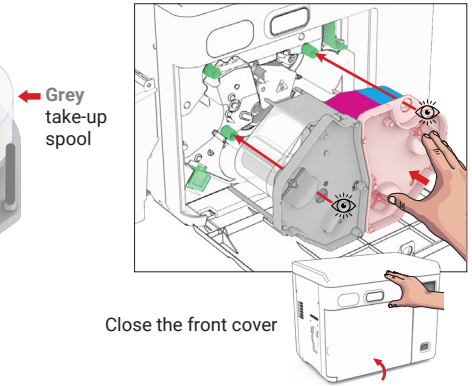
Pull out both cassette systems

Installing ribbon and film



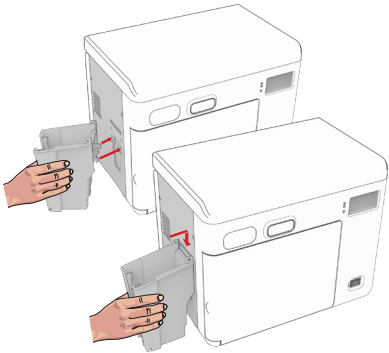
Inserting cassettes into printer

- Using the green knobs and circular apertures in the cassette as reference points, place the cassette into the channels and slide into place.



8. Connecting the output hopper

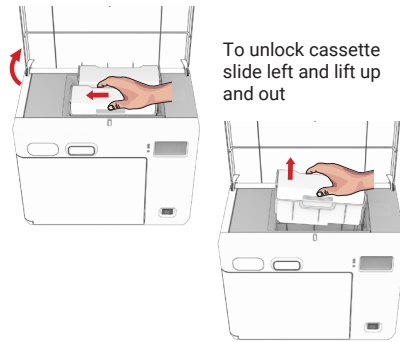
- Connect the output hopper to the left hand side of the printer.



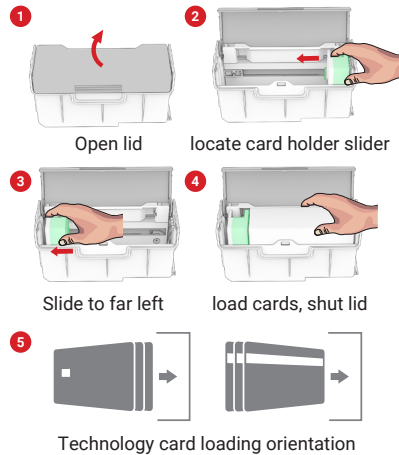
9. Card loading

Removing input cassette

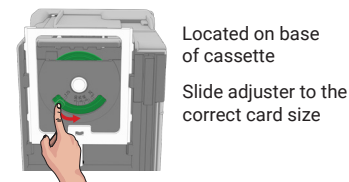
- Open top lid and locate card cassette(s). Dual input models have two cassettes.



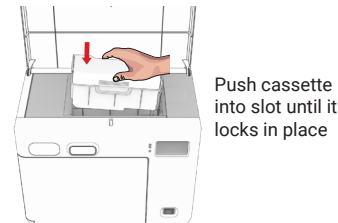
Loading cards



Card thickness adjustment



Replacing input cassette



10. Set up complete

You are now ready to start printing!

