

EMBOSSING
SOLUTIONS

METAL EMBOSSING SOLUTIONS FOR INDUSTRIAL APPLICATIONS

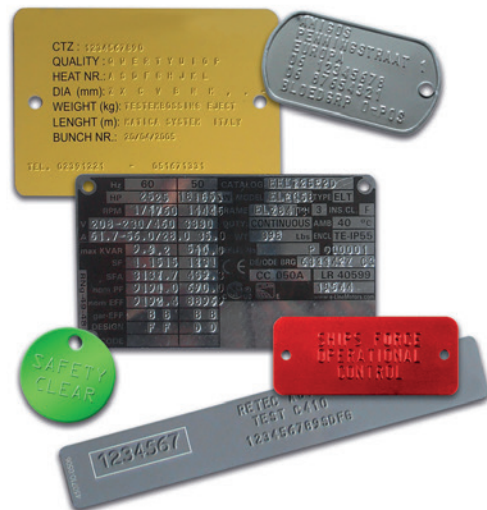


The Most Durable, Versatile Desktop Embossing System

Industrial Grade Metal Plate & Tag Embossing Solution

Whether your organization is an manufacturing plant, a textile factory, a public utility, a logging company, an oil platform, or any number of other industries that require personalized metal plates and tags, Matica offers robust solutions that can meet your embossing needs.

From dog tags to serial number plates, from embossed labels to safety markers, for every kind of industrial need, Matica has the solution. Our durable, versatile embossing system can get the job done. Keep your facilities safe, your personnel informed and your customers happy with properly identified equipment, pipes, products and more.



MATICA
Technologies for a safe world



Metal Plate Embossing for Industrial Applications

From pipe or line safety tags to industrial equipment markers to product serial plates, our metal embossing solutions can handle whatever plates and tags your facility needs.

The Reliable Solution for All Your Industrial Embossing Needs

WHY CONSIDER METAL PLATE EMBOSSING?

For centuries, embossing has been used to permanently mark different materials for both business and personal items. Embossing is still commonly used today in a variety of applications in home, office, outdoor and industrial settings. Items are embossed using metal stamps to push numbers, letters and symbols into plates, tags and labels using intense pressure.

This can be done using a variety of options from individual stencils hammered by hand to large, floor-mounted machines that use thousands of pounds of torque to indent information into a surface. However, in modern times, desktop embossing machines have become common for the majority of the day-to-day embossing needs of most organizations.

From nameplates for office equipment to safety tags for power and communication lines, from identity tags for water and chemical pipes to inspection labels for trees and livestock, there are innumerable uses for embossed metal plates and tags. Nearly every electrical appliance, the utility lines connecting needed services, and the vehicles you use to travel, all have embossed metal markers attached to help identify or label some important part of that item.

WHY CHOOSE A SOLUTION FROM MATICA?

Matica is a global leader in identification and personalization solutions for a wide range of industries, including corporate, financial, medical, education and government entities. Their solutions not only include hardware and software for the issuance of printed cards, but also for embossing them. In addition to embossing cards for financial or medical applications, they also offer proven metal embossing solutions for a variety of industrial needs.

Embossing into metal plates and tags creates durable, weather and chemical resistant labels for anything and everything common in an industrial facility. From tracking tools and equipment to serializing products and spare parts to alerting personnel to dangerous areas or vital conditions, you can be sure that everything is clearly identified and in its proper place.

With an advanced set of system options, like font libraries, extended character drums, adjustable plate sizes, and more, Matica's metal plate embossing system'd durable design lets you be flexible in your plate and tag production. [Contact Matica](#) today or talk with your local representative for information or to receive embossed samples.



Applications

- Industrial & Commercial
- Marine, Shipping & Transit
- Aerospace & Military
- Medical & Botanical
- Heavy Equipment
- Utilities & Infrastructure

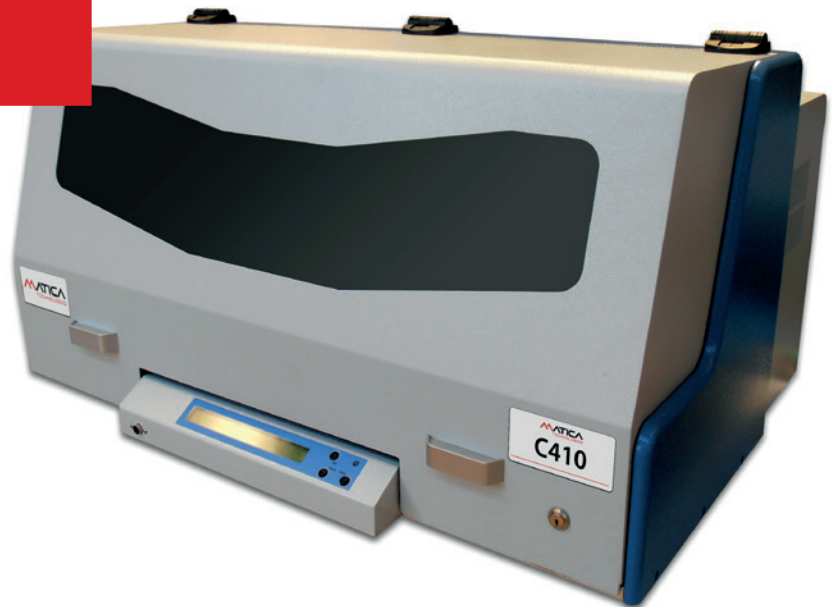


C410 Embosser

The Matica C410 electronic embosser has been specifically engineered for heavy duty and continuous production. It is a strong, reliable system ready to emboss metal plates and tags from a huge variety of sizes, materials, shapes and thicknesses.

The C410 can emboss areas as small as 16mm up to 120mm, configured with six options character style.

The C410 can quickly and efficiently produce all of the metal markers and labels you facility needs to properly identify equipment, lines, vehicles, supplies, parts, and more.

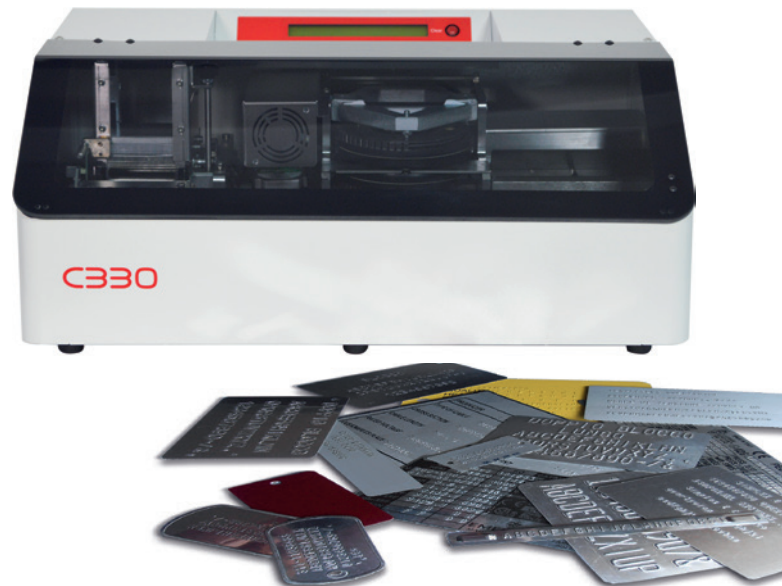


C330 Embosser

A compact version of metal plate embosser that feature with a silent embossing mechanism that suitable for both office and industrial environment.

The C330 is specifically designed for industry that require low to medium volume production or as a back up unit for larger system.

The adjustable universal plate feeder make it versatile for numerous applications, which allow user to emboss various plate dimension between 50x20 mm. to 90x60 mm.





One Embosser To Do It All

Pick the industrial-strength, metal embossing solution used around the world for applications big and small. Matica metal embossing solutions has adjustable settings for use with the most popular metals, fonts and plate/tag sizes for all of your industrial embossing needs.



Depends on various application requirements, Matica has the right solution to make embossed metal tags and plates for lines, cables, poles, towers and other structures used for power, communication, traffic control and more.

You can personalize product serial number plates, spare parts tags, material supply labels and much more. Unlike plastic plates and tags, metal ones can withstand most industrial conditions including extreme temperatures, chemicals and abrasives.

You can even produce metal tags and plates for tracking office items like filing cabinets, office equipment and IT hardware, as well as things behind the walls like heating/cooling systems, ventilation ducts, plumbing lines, electrical junctions and more.

Outside there are lots of moving parts and stationary objects like heavy machinery, company vehicles and rental equipment, plus warehousing things like shelving, tools, storage crates, bins, and any number of items that need to be tagged and tracked.

There are also plenty of items up in the air or deep underground that need metal tags or plates to mark, date, track or identify like water pipes, gas lines, fuel tanks, sewage channels and more. Each industrial facility is an entire ecosystem of metal tags.

About Matica

Matica is a global company with a strong international network. Matica develops, manufactures and markets solutions to issue ID cards, financial cards and passports for secure ID and payments applications, working in several markets: government, healthcare, transportation, education, and financial. The company offers a comprehensive hardware and software product portfolio, from desktop systems – including ID card printers, desktop laser engraving systems and passport printers – to central issuance solutions for high volume applications, including mailing systems. The Group is worldwide with offices in the USA, Germany, Italy, France, Singapore, China, the UAE and India.

Authorized Reseller / System Integrator



Matica
marketing@maticacorp.com

maticacorp.com

Data subject to change without notice.
All trademarks stated are the property of their respective owners. METAL EMBOSSE SOLUTIONS_VB_2020_07_ENG_LETTER