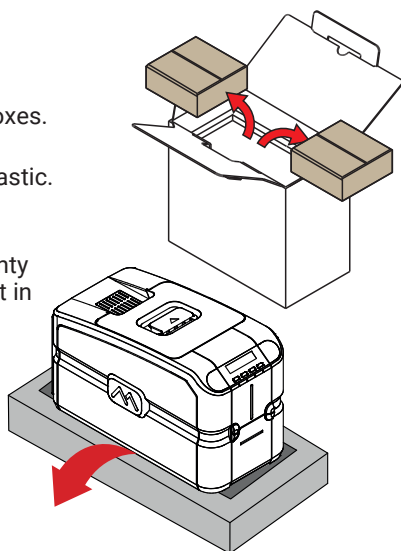


MC310 - Quick Start Guide - page 1

1

Open the carton box

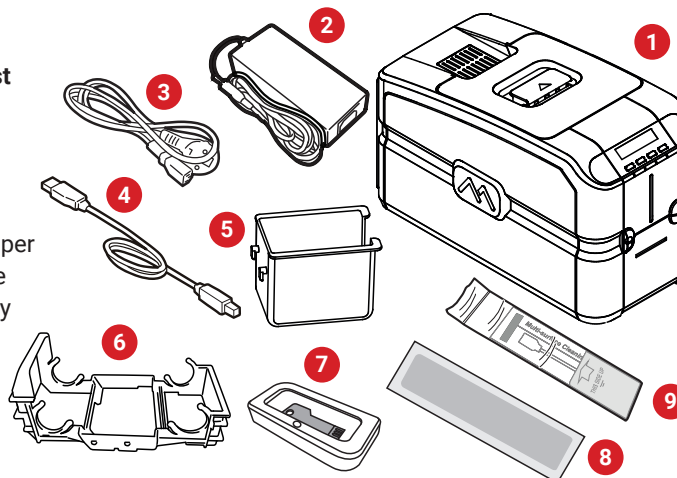
- Remove accessory boxes.
- Carefully remove the printer and remove plastic.
- Retain and store all packing materials for future use. Any warranty returns should be sent in original packaging.



2

Contents check list

1. MC310 printer
2. Power supply
3. Power cord
4. USB cable
5. Rear output hopper
6. Ribbon cartridge
7. USB memory key
8. Cleaning card
9. Cleaning swab

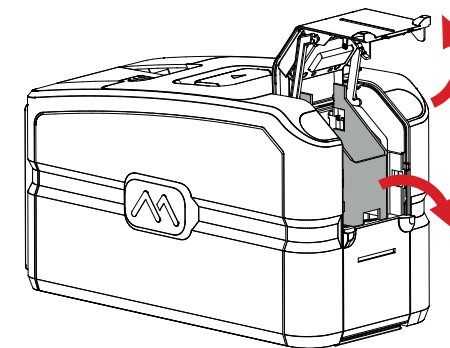


Please make sure that all the components and accessories are included in the box. If there are missing or damaged items, please contact your dealer for assistance.

3

Remove card feeder packaging

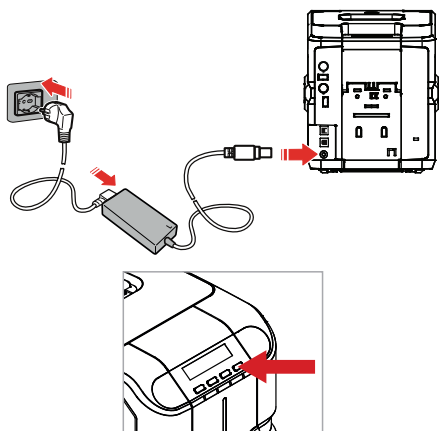
- Open the front card feeder door and remove the protective cardboard.



4

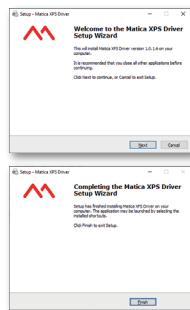
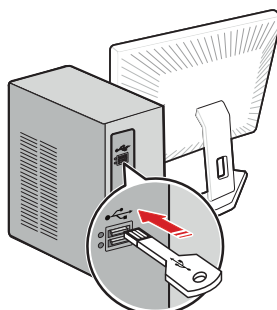
Power your printer

- Connect the AC power supply.
- Power ON the printer.



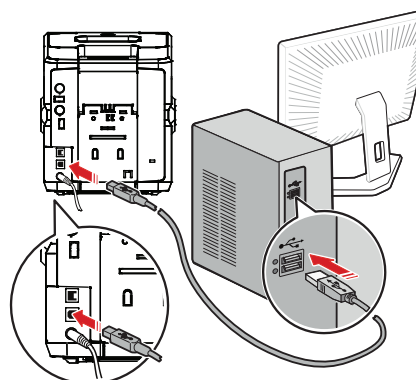
Install driver

- Connect the USB memory key to a computer and install the driver by selecting the MC310 XPS driver file.



Connect USB cable

- Connect the printer to the computer using the USB cable when instructed during driver installation.



5

Register your printer: www.maticagroup.com/register

- Validate your warranty
- Receive notifications of driver and firmware updates
- Gain easy access to support
- Claim your

FREE software:

CardExchange
Producer
Lite edition

Free software

CARDEXCHANGE
PRODUCER
Lite edition

Register: **via mobile**

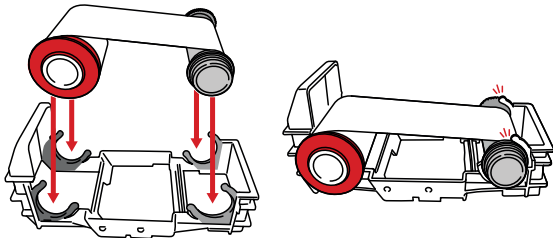
- Scan the QR code to the registration page and follow the online instructions.



6

Install the ribbon into the cartridge system

- Place red reel into 'FRONT SIDE' of cartridge and push securely into clips.
- Place grey reel into the other end of the cartridge and push securely into clips.

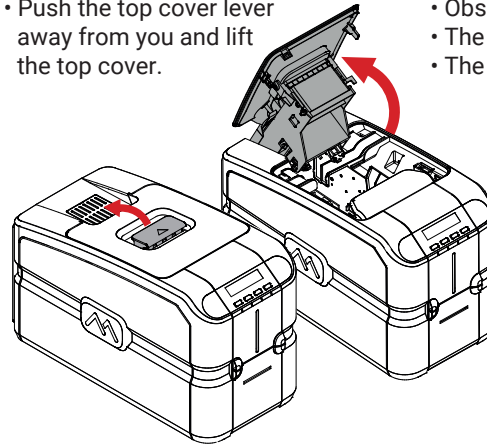


7

Installing the ribbon cartridge into printer

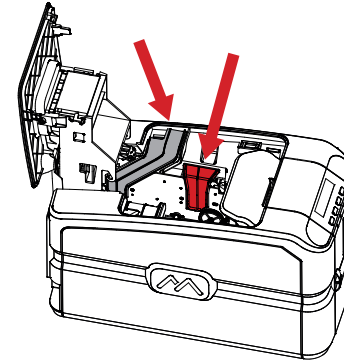
Open printer

- Push the top cover lever away from you and lift the top cover.



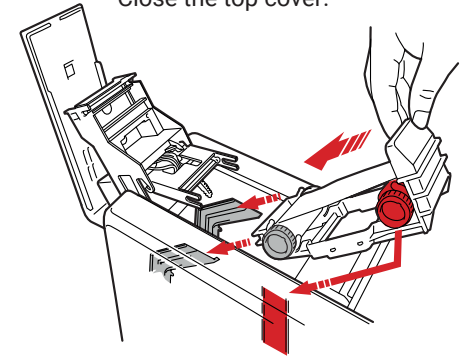
Printer ribbon guides

- Observe the guides to insert the ribbon cartridge.
- The channel for the red reel is red.
- The channel for the grey reel is dark grey.



Inserting ribbon into printer

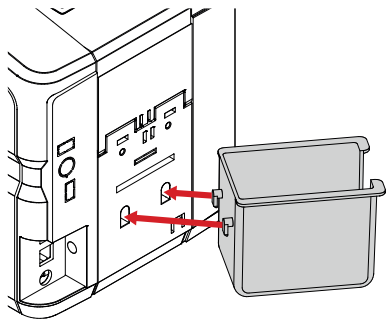
- Place the reels into the appropriate channel and slide the ribbon cartridge into place.
- Close the top cover.



8

Connecting the rear hopper

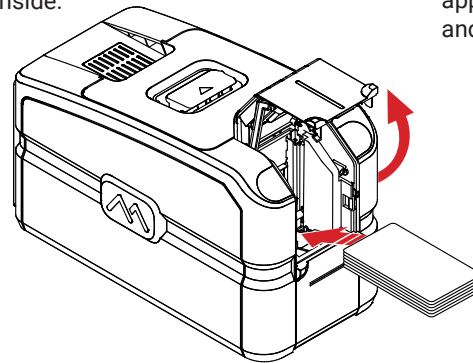
- If required, connect rear hopper to rear end of the printer.



9

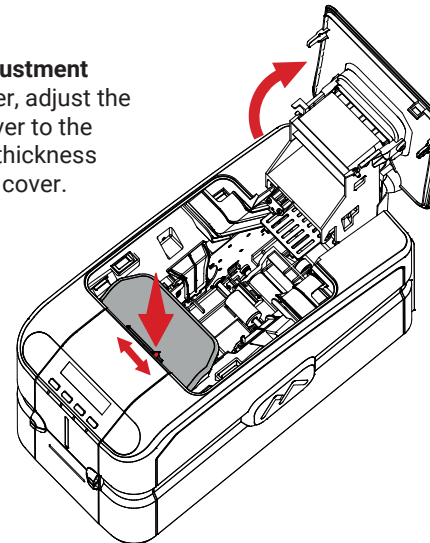
Loading cards

- Open front card door and insert cards according to the card orientation sticker inside.



Card thickness adjustment

- Open the top cover, adjust the card thickness lever to the appropriate card thickness and close the top cover.



10

You are now ready to start printing!

