

MC210

Free software

CARDEXCHANGE™



Warranty

3 YEARS

Robust, reliable ID card printing for all environments



Matica's MC210 is a **robust** and **reliable** option for ID card issuance, its ruggedized, stylish design makes it suitable for use in any environment.

Upgradable from single to dual-sided, the MC210 is also available with multiple secure card **encoding options** and can be integrated seamlessly with an **inline laminator**.

The MC210 is perfect for schools, colleges and medium sized businesses for mid-volume issuance. Based on Matica's established print engine, when it comes to secure and reliable ID card printing, you can trust the MC210 to deliver.

Print type Dye sublimation	300 dpi Resolution	Print mode 1 or 2 sided	180 cph Full color	1000 cph Monochrome
Easy to use Plug & print	Input capacity x100	Output capacity 30 front / 80 back	Ethernet 	LCD display READY
Reject bin 	Encoding Options	Printer drivers Windows® / Mac	Lamination Inline option	Rewritable ABC

MC210 delivers...

- ▶ Robust, reliable build quality
- ▶ High quality 300dpi printing
- ▶ Up to 180 color cards per hour
- ▶ Versatility - including multiple encoding and lamination
- ▶ 3 years warranty



Ideal for...

- ▶ Mid volume card issuance

MC210

Printer specifications

Print technology

Dye-sublimation, direct-to-card
Rewritable

Print resolution

300 dpi

Print area

53.98 x 85.6mm / 3.370" x 2.125" (CR-80 cards)

Print speed

- 180 cph (YMCKO single-side)
- 1000 cph (monochrome printing)

Print mode

Single or dual-sided (optional)

Printer memory

128 Mb

Communications interface

USB 2.0, Ethernet 10BaseT, 100BaseT

Easy to use, plug and print operation

- LCD display with graphical notifications
- 4 x LED status indicators
- Full front operation
- Drop in ribbon cassette with easy handling
- Automatic ribbon identification and setting
- Easy reach power button
- Easy maintenance access

Printer security

Support for Kensington® security lock

Printer dimensions (HxWxD)

256 x 202 x 405 mm / 10.6" x 7.9" x 15.9"

Weight

6.8 kg, 15 lb

Power supply

- 220-240V/110-115V, 50-60 Hz
- Standby mode and reduced power consumption

Operating environment

- Temperature: 15°C - 40°C, 59°F - 104°F
- Humidity: 20% - 65% (non-condensing)

Storage conditions

- Temperature: -5°C to 70°C, 23°F to 158°F
- Humidity: 20% to 70% (non-condensing)

Sound (ISO 7779)

Sound pressure less than 48dB (A)

Certifications

RoHS, CE, FCC, CQC, UL, WEEE,
Proposition 65 (California, USA)

Warranty

3 years (subject to the use of chromXpert® ribbons)

Card specifications

Input hopper capacity

100 cards (0.76 mm / 30 mil thickness)

Output hopper capacity

30 cards (front)
80 cards (rear/reject)

Card thickness

- 0.25 mm - 1.25 mm / 10 mil - 50 mil
- Gauge adjustment

Card types

CR-80 PVC, PVC-C

Software specifications

XPS printer driver

Windows® (32/64bit) 7, 8.1, 10, 11, Server 2012,
2016, 2019, 2022

MacOS

MacOS: from Mavericks 10.9 to Ventura 13.1

Options

Magnetic stripe encoding

ISO 7811 HiCo/LoCo (factory fit only)

Smart card / Contactless encoding

- Contact PC/SC, EMV compliant
- Smart contact station: ISO 7816-2
- ISO14443A, B, ISO15693, MIFARE®, DESFire®,
HID iClass®

Dual-side activation kit

PR10300016

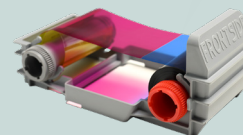
Inline lamination

Single or dual-side, sold with compatibility plinth



Consumables chromXpert

- To ensure print quality and card durability, printhead lifespan and overall printer reliability, use chromXpert ribbons only.
- Supply cores and cassettes are recyclable. Packaging is recycled.



ChromXpert™ ribbon program	Part No.
• YMCKO (250 prints)	Platinum: PR20307301 Diamond: PR20319301
• YMCKO-K (200 prints)	Platinum: PR20307302 Diamond: PR20319302
• ymc-KO (400 prints, half panel)	PR20319303
• KO (600 prints)	PR20305304
• Monochrome K (up to 2000 prints)	PR20314305
• Mono: Silver (up to 500 prints)	PR20314306
• Mono: Gold (up to 500 prints)	PR20314307
• Monochrome: White, Red, Green, Blue, Scratch-off (up to 1000 prints)	Also available
Cleaning kit	PR20309610



Global offices

Europe: Switzerland HQ, Italy

Asia: Malaysia, India

USA: South Carolina HQ, Minneapolis

Middle East: Dubai



Authorized reseller / System integrator

MC210 Datasheet A4 UK V9
Data subject to change without notice. All trademarks stated
are the property of their respective owners.