

# MC-L2

Warranty

2 YEARS

## Inline laminator for added durability and security



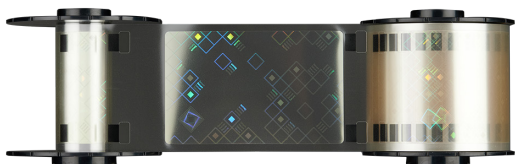
### Increasing card longevity and security

The MC-L2 laminator module is the ideal solution to enhance the durability and the security of cards printed on the MC310 direct to card printer or XID-M retransfer printer series. Easy to install and operate, the MC-L2 works inline to laminate cards at exceptional speeds, laminating both sides of the card in less than 20 seconds thanks to the simultaneous dual-side lamination process.

The MC-L2 can be easily connected to the MC310 using a connection plinth, which also serves as a useful lockable storage unit for cards and cleaning kits. It connects to the XID-M retransfer printer series with an easy-to-fit adaptor.

### The MC-L2 is available in three different configurations to suit any card lamination application:

- Single-sided lower cassette only
- Single-sided upper cassette only
- Dual-sided with both lower and upper cassettes



### Enhancing card security

Once personalized, cards can be laminated with the MC-L2 by using a heat-sealing film. This film can contain **holographic** and other **Visual Security Elements (VSEs)** for enhanced protection. Matica offers a range of standard holographic designs in both patch laminate and continuous film formats. For the ultimate security protection, organisations can opt for a customized holographic laminate with VSEs that are unique to them – this approach is often adopted for government secure documents such as driving licenses and national ID cards.

### MC-L2 delivers...

- ▶ Compact desktop design that seamlessly integrates with the MC310 direct-to-card printer or XID-M retransfer printer series
- ▶ Up to 180 cards per hour
- ▶ Controllable from the Matica XPS driver or from EDIsecure®

### Ideal for...

- ▶ National ID cards
- ▶ Driving licenses
- ▶ Resident cards
- ▶ Corporate cards
- ▶ Campus / student cards



<b>Print mode</b>  Dual-sided (standard)	<b>Inline lamination</b>  with MC310/XID-M	<b>Lamination speed</b>  19 seconds	<b>Output capacity</b>  150
<b>LCD display</b>  READY	<b>Secure ribbon</b>  Options	<b>Custom hologram</b>  Overlamine	<b>Lamination</b>  Dual-sided option

# MC-L2

## Specifications

### Lamination Method

- Heated roller

### Lamination Mode

- Single and dual-sided

### Lamination speed

- 19 seconds

### Halogen lamp

- Single: 500W x 1 vertical
- Dual: 500W x 2 vertical

### Warm-up time

- 40 - 50 seconds

### Laminating Temperature

- 120°C to 195°C

### Communications interface

- USB 2.0 (high speed)
- RS232

### Printer security

- Support for Kensington® security lock

### Printer dimensions (HxWxD)

- 320 x 214 x 320mm (12.5" x 8.4" x 12.6")

### Weight

- 10 kg, 22 lbs

### Power supply

- 90-270V / 47-63 Hz

### Operating environment

- Temperature: 15°C - 30°C, 59°F - 86°F
- Humidity: 20% - 60% (non-condensing)

### Storage conditions

- Temperature: 5°C to 70°C, 23°F to 158°F
- Humidity: 20% to 70% (non-condensing)

### Sound (ISO 7779)

- Sound pressure less than 48dB (A)

### Certifications

- FCC Class A, CE (EN 55022 Class A, EN 550024), cUL, KCC

### Warranty

- 2 years (subject to the use of chromXpert® laminates)

## Card specifications

### Input capacity

- Manual feed or inline with MC310 or XID-M series printers

### Output hopper capacity

- 150 cards

### Card format

- 53.98 x 85.6mm / 3.370" x 2.125" (CR-80 cards)

### Card thickness

- 0.76 mm - 1.0 mm / 30 mil - 40 mil

### Card types

- PVC, PET-G, PET, ABS, PC

## Software specifications

### Printer driver

- 32-bit and 64-bit compatible: Windows 7, 8, 10, Windows 2003/2008/2012 Server

## Consumables

chromXpert

- To ensure lamination quality and card durability and overall laminator reliability, use chromXpert laminates only.

- Supply cores and cassettes are recyclable. Packaging is recycled.

Clear laminates	Format	Capacity	Part No.
Clear	0.5mil clear patch	500	PR26605406
Clear	1.0mil clear patch	500	PR26605401
Clear with chip cutout	0.5mil clear patch	500	PR26605407
Clear with chip cutout	1.0mil clear patch	500	PR26605402
Clear	Thin film overlay	1000	PR26605500

Holographic laminates	Format	Capacity	Part No.
Secure A	0.6mil patch	500	PR26608412
Secure A	1.0mil patch	500	PR26608415
Secure A chip cutout	0.6mil patch	500	PR26608414
Secure A	Thin film overlay	1000	PR26608503
Secure B	0.6mil patch	500	PR26608413
Customized	Thin film overlay	1000	PR26605502
Customized	0.6mil patch	500	PR26605411
Customized	1.0mil patch	500	PR26605410



## Global offices

Europe: Switzerland HQ, Italy

Asia: Malaysia, India

USA: South Carolina HQ, Minneapolis

Middle East: Dubai



Authorized reseller / System integrator

Data subject to change without notice. All trademarks stated are the property of their respective owners.

MC-L2 Datasheet A4 UK V3