

Inline laminator for added durability and security



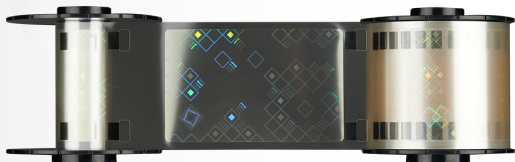
Increasing card longevity and security

The **MC-L2** laminator module is the ideal solution to enhance the durability and the security of cards printed on the **MC310** direct to card printer or **XID-M** retransfer printer series. Easy to install and operate, the MC-L2 works inline to laminate cards at exceptional speeds, laminating both sides of the card in less than 20 seconds thanks to the simultaneous dual-side lamination process.

The MC-L2 can be easily connected to the MC310 using a connection plinth, which also serves as a useful lockable storage unit for cards and cleaning kits. It connects to the XID-M retransfer printer series with an easy-to-fit adaptor.

The MC-L2 is available in three different configurations to suit any card lamination application:

- Single-sided lower cassette only
- Single-sided upper cassette only
- Dual-sided with both lower and upper cassettes



Enhancing card security

Once personalized, cards can be **laminated** with the MC-L2 by using a heat-sealing film. This film can contain **holographic** and other **Visual Security Elements (VSEs)** for enhanced protection. Matica offers a range of standard holographic designs in both patch laminate and continuous film formats. For the ultimate security protection, organisations can opt for a customized holographic laminate with VSEs that are unique to them – this approach is often adopted for government secure documents such as driving licenses and national ID cards.

MC-L2 delivers...

- ▶ Compact desktop design that seamlessly integrates with the MC310 direct-to-card printer or XID-M retransfer printer series
- ▶ Up to 180 cards per hour
- ▶ Controllable from the Matica XPS driver or from EDIsecure®

Ideal for...

- ▶ National ID cards
- ▶ Driving licenses
- ▶ Resident cards
- ▶ Corporate cards
- ▶ Campus / student cards



Print mode Dual-sided (standard)	Inline lamination with MC310/XID-M	Lamination speed 19 seconds	Output capacity 150
LCD display READY	Secure ribbon Options	Custom hologram Overlamine	Lamination Dual-sided option

MC-L2

Laminator specifications

Lamination Method

Heated roller

Lamination Mode

Single and dual-sided

Lamination speed

19 seconds

Halogen lamp

- Single: 500W x 1 vertical
- Dual: 500W x 2 vertical

Warm-up time

40 - 50 seconds

Laminating Temperature

120°C to 195°C

Communications interface

- USB 2.0 (high speed)
- RS232

Printer security

Support for Kensington® security lock

Printer dimensions (HxWxD)

320 x 214.1 x 320.1 mm (12.5" x 8.4" x 12.6")

Weight

10 kg, 22 lbs

Power supply

90-270V / 47-63 Hz

Operating environment

- Temperature: 15°C - 30°C, 59°F - 86°F
- Humidity: 20% - 60% (non-condensing)

Storage conditions

- Temperature: 5°C to 70°C, 23°F to 158°F
- Humidity: 20% to 70% (non-condensing)

Sound (ISO 7779)

Sound pressure less than 48dB (A)

Certifications

FCC Class A, CE (EN 55022 Class A, EN 550024), cUL, KCC

Warranty

2 years (subject to the use of chromXpert® laminates)

Card specifications

Input capacity

Manual feed or inline with MC310 or XID-M series printers

Output hopper capacity

150 cards

Card format

53.98 x 85.6mm / 3.370" x 2.125" (CR-80 cards)

Card thickness

0.76 mm - 1.0 mm / 30 mil - 40 mil

Card types

PVC, PET-G, PET, ABS, PC

Software specifications

Printer driver

32-bit and 64-bit compatible: Windows 7, 8, 10, Windows 2003/2008/2012 Server

Consumables

chromXpert

- To ensure lamination quality and card durability and overall laminator reliability, use chromXpert laminates only.

- Supply cores and cassettes are recyclable. Packaging is recycled.

Clear laminates	Format	Capacity	Part No.
Clear	0.5mil clear patch	500	PR26605406
Clear	1.0mil clear patch	500	PR26605401
Clear with chip cutout	0.5mil clear patch	500	PR26605407
Clear with chip cutout	1.0mil clear patch	500	PR26605402
Clear	Thin film overlay	1000	PR26605500

Holographic laminates	Format	Capacity	Part No.
Secure A	0.6mil patch	500	PR26608412
Secure A	1.0mil patch	500	PR26608415
Secure A chip cutout	0.6mil patch	500	PR26608414
Secure A	Thin film overlay	1000	PR26608503
Secure B	0.6mil patch	500	PR26608413
Customized	Thin film overlay	1000	PR26605502
Customized	0.6mil patch	500	PR26605411
Customized	1.0mil patch	500	PR26605410



Global offices

Europe: Switzerland HQ, Italy

Asia: Malaysia, India

USA: Minneapolis HQ, South Carolina

Middle East: Dubai



Authorized reseller / System integrator

Data subject to change without notice. All trademarks stated are the property of their respective owners.

MC-L2 Datasheet A4 UK V2