

# MC-L

Warranty

2  
years

## High performance inline / stand-alone card laminator

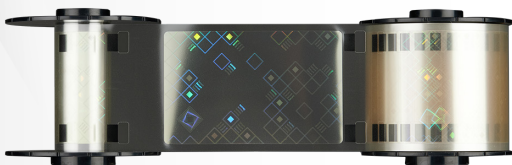


### Enhancing card security and durability inline with the MC660 printer or as a stand-alone unit

The **MC-L laminator module** is the ideal solution to enhance the durability and the security of cards printed on the **MC660 retransfer card printer**. Easy to install and operate, the MC-L can either work inline with the MC660, using the connection plinth supplied, or can be operated as a stand-alone unit. It laminates cards at exceptional speeds, laminating both sides of the card in less than 20 seconds thanks to the simultaneous dual-side lamination process.

The **MC-L is available in three different configurations to suit any card lamination application:**

- Single-sided lower cassette only
- Single-sided upper cassette only
- Dual-sided with both lower and upper cassettes



### Enhancing card security

Once personalized, cards can be **laminated** with the MC-L by using a heat-sealing film. This film can contain **holographic** and other **Visual Security Elements (VSEs)** for enhanced protection. Matica offers a range of standard holographic designs in both patch laminate and continuous film formats. For the ultimate security protection, organisations can opt for a customized holographic laminate with VSEs that are unique to them – this approach is often adopted for government secure documents such as driving licenses and national ID cards.

### MC-L delivers...




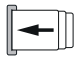





- ▶ Compact desktop design that seamlessly integrates with the MC660 retransfer printer
- ▶ Up to 180 cards per hour
- ▶ Controllable from Matica's Edisecure driver

### Ideal for...

- ▶ National ID cards
- ▶ Driving licenses
- ▶ Resident cards
- ▶ Corporate cards
- ▶ Campus / student cards



MC-L with MC660 retransfer card printer

<b>Print mode</b>  Dual-sided (standard)	<b>Inline lamination</b>  with MC660	<b>Lamination</b>  Stand alone	<b>Input capacity</b>  100
<b>Output capacity</b>  150	<b>Lamination speed</b>  19 seconds	<b>Custom hologram</b>  Retransfer film	<b>LCD display</b>  READY
<b>Reject bin</b> 			

## Laminator specifications

<b>Lamination Method</b>	<b>Dimensions (HxWxD)</b>
Heated roller	319.4 x 215.9 x 314.1 mm (12.5" x 8.5" x 12.3")
<b>Lamination Mode</b>	<b>Weight</b>
Single and dual-sided	10 kg, 22 lbs
<b>Lamination speed</b>	<b>Power supply</b>
19 seconds	90-270V / 47-63 Hz
<b>Halogen lamp</b>	<b>Operating environment</b>
• Single: 500W x 1 vertical • Dual: 500W x 2 vertical	• Temperature: 15°C - 30°C, 59°F - 86°F • Humidity: 30% - 70% (non-condensing)
<b>Warm-up time</b>	<b>Sound (ISO 7779)</b>
40 - 50 seconds	Sound pressure less than 48dB (A)
<b>Laminating temperature</b>	<b>Certifications</b>
120°C to 195°C	RoHS, CE, WEEE, Proposition 65
<b>Communications interface</b>	<b>Warranty</b>
• USB 2.0 (high speed) • RS232	2 years (subject to the use of chromXpert® laminates)
<b>Printer security</b>	
Support for Kensington® security lock	

## Card specifications

<b>Input capacity</b>
• 100 cards hopper (stand-alone option only) • Manual feed
<b>Output hopper capacity</b>
150 cards
<b>Card format</b>
53.98 x 85.6mm / 3.370" x 2.125" (CR-80 cards)
<b>Card thickness</b>
0.76 mm - 1.0 mm / 30 mil - 40 mil
<b>Card types</b>
PVC, PET-G, PET, ABS, PC

## Software specifications

<b>Printer driver</b>
32-bit and 64-bit compatible: Windows 7, 8, 10, Windows 2003/2008/2012 Server

## Consumables

chromXpert

• To ensure lamination quality and card durability and overall laminator reliability, use chromXpert laminates only.

• Supply cores and cassettes are recyclable. Packaging is recycled.

Clear laminates	Format	Capacity	Part No.	Holographic laminates	Format	Capacity	Part No.
Clear	0.5mil clear patch	500	PR26605406	Secure A	0.6mil patch	500	PR26608412
Clear	1.0mil clear patch	500	PR26605401	Secure A	1.0mil patch	500	PR26608415
Clear with chip cutout	0.5mil clear patch	500	PR26605407	Secure A chip cutout	0.6mil patch	500	PR26608414
Clear with chip cutout	1.0mil clear patch	500	PR26605402	Secure A	Thin film overlay	1000	PR26608503
Clear	Thin film overlay	1000	PR26605500	Secure B	0.6mil patch	500	PR26608413
				Customized	Thin film overlay	1000	PR26605502
				Customized	0.6mil patch	500	PR26605411
				Customized	1.0mil patch	500	PR26605410



## Global offices

**Europe:** Switzerland HQ, Italy, UK and Germany

**Asia:** Malaysia, China and India

**USA:** Minneapolis HQ, South Carolina and San Francisco

**Middle East:** Dubai



Authorized reseller / System integrator

Data subject to change without notice. All trademarks stated are the property of their respective owners.

MC-L Datasheet A4 UK V1