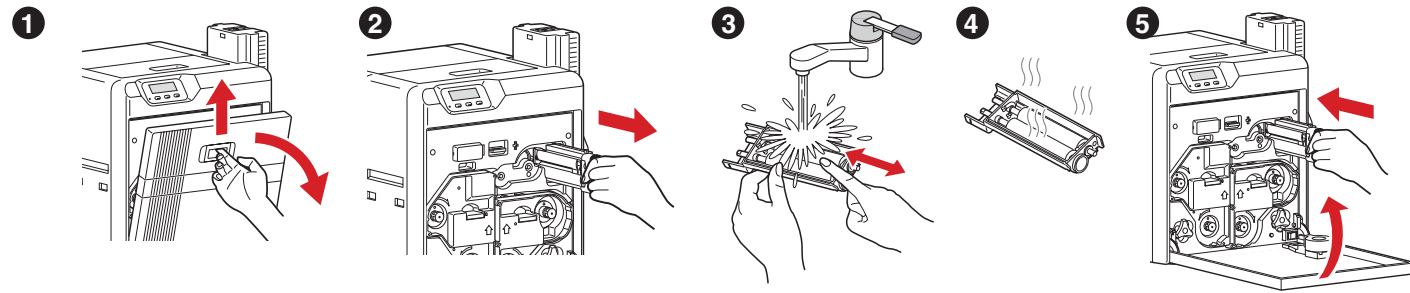


## Maintenance of cleaning roller

XID8300



1. Open the printer door.
2. Remove the cleaning unit.
3. Wash the cleaning roller with water.  
- Wash the roller with water, and remove any dirt from the surface of the cleaning roller with your finger.
4. Allow the cleaning roller to air dry.
5. Set the cleaning unit, and close the printer door.

### Precautions

- If the security lock function is turned on, turn off the function from the computer to unlock the printer. After closing the door, turn on the function again from the computer.
- Start work after ensuring that the power has been turned off.
- If the printer is used every day, make sure to clean the cleaning roller daily at the end of the operation.
- After washing, allow the cleaning roller to dry completely before installing it to the printer.
- Do not wash the cleaning roller with anything other than water (e.g., alcohol).
- Replace the cleaning unit with a new one after using it for about one year. For details on its replacement, please consult our authorized dealers.

[maticagroup.com](http://maticagroup.com)

Copyright 2023 Matica Technologies Group SA.  
All rights reserved. Information in this document is subject to change without prior notice.

LST0995-002H

## Quick Start Guide

**MATICA**  
GROUP

EDISecure®

# XID8300 Retransfer card printer

Thank you for purchasing this product.

Please read through the User Manual located at [www.maticagroup/install/XID8300](http://www.maticagroup/install/XID8300) in advance to ensure proper use of this product. To make sure that this product is used safely, please read through the "Safety Precautions" in the "READ ME FIRST" booklet.

## Document contents and information

### Accessories

• Quick Start Guide	x1
• READ ME FIRST (LST1013)	x1
• Power cord (2 m)	x1
• Cleaning card	x1
• Card stacker	x1
• USB 2.0 cable (2m)	x1
• Gloves	x1
• Tweezers	x1

### Products sold separately

To purchase these items, consult our authorized dealers.

Use the retransfer film or ink ribbon within half a year after purchase.

Ribbon	Capacity	Part Number
• ChromXpert platinum line ink ribbon (YMCK)	1,000 prints	DIC10216
• ChromXpert platinum line ink ribbon (YMCKK)	750 prints	DIC10217
• ChromXpert platinum line ink ribbon (YMCK-PO)	750 prints	DIC10218
• ChromXpert platinum line ink ribbon (YMCK-UV)	750 prints	DIC10313
• ChromXpert platinum line retransfer film	1,000 prints	DIC10319
• Cleaning kit, set includes:		DIK10044
- 10 printhead cleaning swabs,		
- 10 cleaning tissues for rollers		
- 10 special cleaning cards		
• Magnetic stripe encoder head cleaning cards		DIC10311

### Content of Instruction Manual

• Before use :	Precautions, disclaimer, etc.
• Operating the printer :	Procedures for printing cards
• Replacement :	Procedures for replacing consumable items
• Maintenance :	Cleaning procedures
• Troubleshooting :	Actions to take when troubles occur
• Setup :	Installation, connection

### Specifications

- Operating environment conditions :  
Temperature: 15 °C to 30 °C  
(When peel-off ink, UV ink is used: 17 °C to 28 °C)  
Humidity: 35 % to 70 % No condensation  
(When peel-off ink, UV ink is used: 35 % to 60 %)
- Storage environment conditions :  
<Printer unit>  
Temperature : -15 °C to 55 °C  
Humidity : 20 % to 80 %  
<Printing media (retransfer film or ink ribbon) / card>  
Temperature : 5 °C to 25 °C  
Humidity : 40 % to 60 %
- Power supply : AC 100 V - 120 V, 50 Hz/60 Hz, AC 220 V - 240 V, 50 Hz/60 Hz
- Power consumption : 310 W (maximum power when all options are installed)
- Current consumption : 3.5 A (100 V system), 1.6 A (200 V system)
- Mass approx. : 14.4 kg (single-sided printer, excluding optional built-in items)
- Dimensions : 343 x 411 x 322 mm (W x H x D)

**NB.** The specifications and appearance of this product may be modified for improvement without prior notice.

## Function and option checklist

Use the checklist below to identify the functions and options of the printer in use.

Model name:

Function Tick accordingly

Single-sided printing :

Double-sided printing :

Option Tick accordingly

Bend remedy unit :

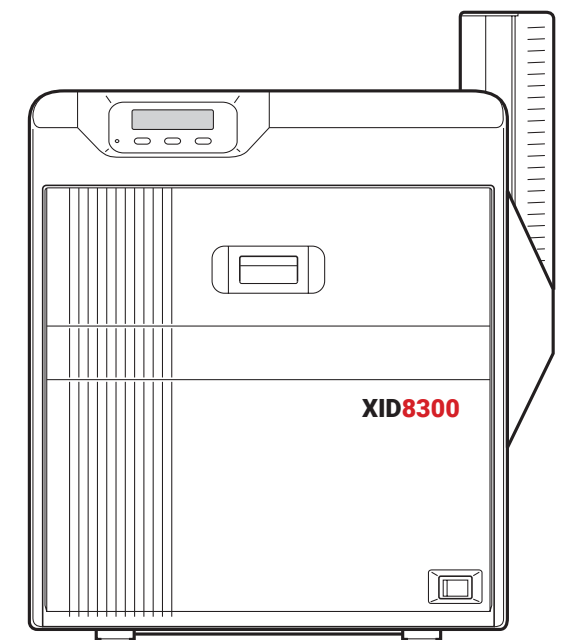
Magnetic stripe encoder :

Contact IC :

Encoder :

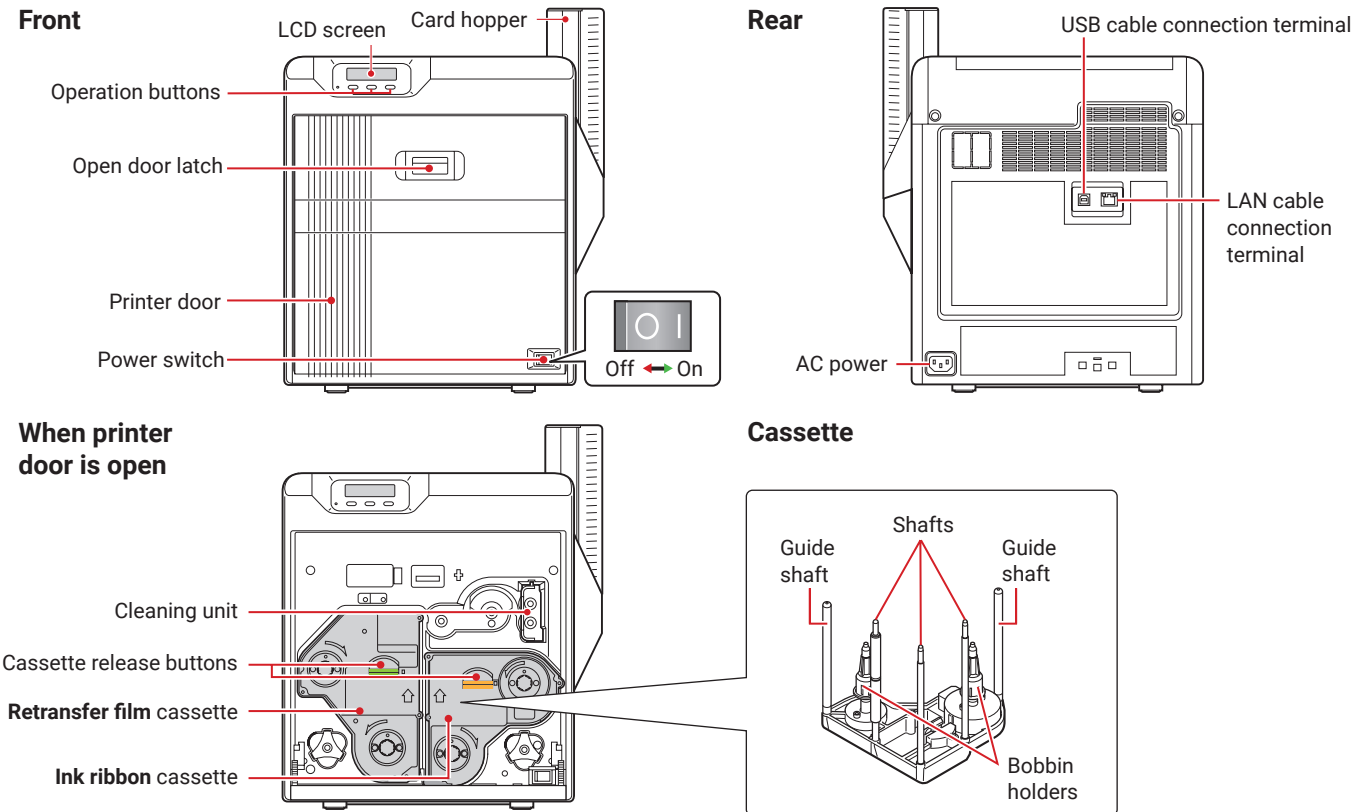
Non-contact IC :

Encoder :



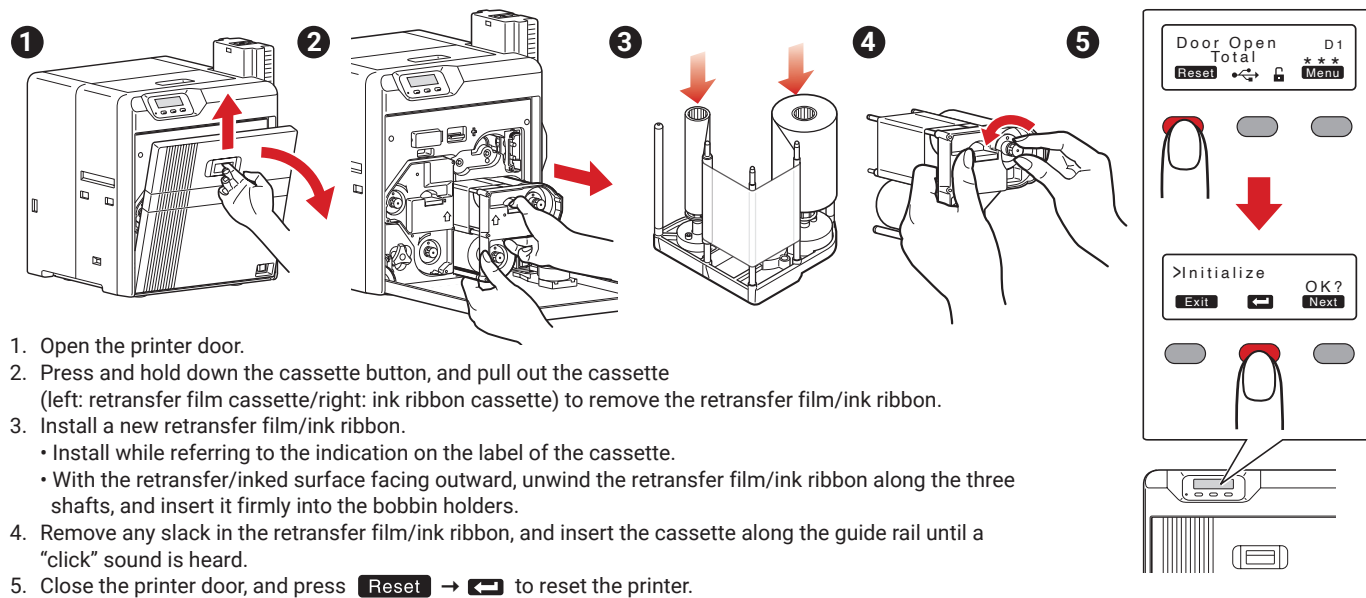
## Printer overview

XID8300



## Replacing the retransfer film/ink ribbon

XID8300



### Precautions

- If the security lock function is turned on, turn off the function from the computer to unlock the printer. After closing the door, turn on the function again from the computer.
- When installing a used ink ribbon, align the yellow side of the unused ribbon with the arrow indicated on the label of the cassette.
- When installing a used retransfer film, align the unused side of the film with the arrow indicated on the label of the cassette.
- Stand the cassette on a flat surface as illustrated in the diagram.
- The cassette is heavy when the retransfer film/ink ribbon is loaded. To prevent the cassette from dropping during handling, make sure to hold it with both hands.
- Do not touch the retransfer/inked face (the side that faces outward when installed) with your hand. Touching it may cause printing errors. Put on the supplied gloves when handling the retransfer film/ink ribbon.
- Do not perform any work on the printer door. Do not place heavy objects or apply load on the printer.
- When installing a new film, make sure that at least three black lines are wound onto the take-up side.

## Install printer driver

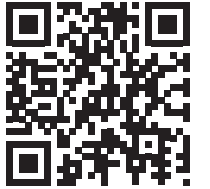
XID8300

Visit: [www.maticagroup.com/install](http://www.maticagroup.com/install)

Or scan the QR code opposite using your computer's webcam to the installation page and follow the online instructions.

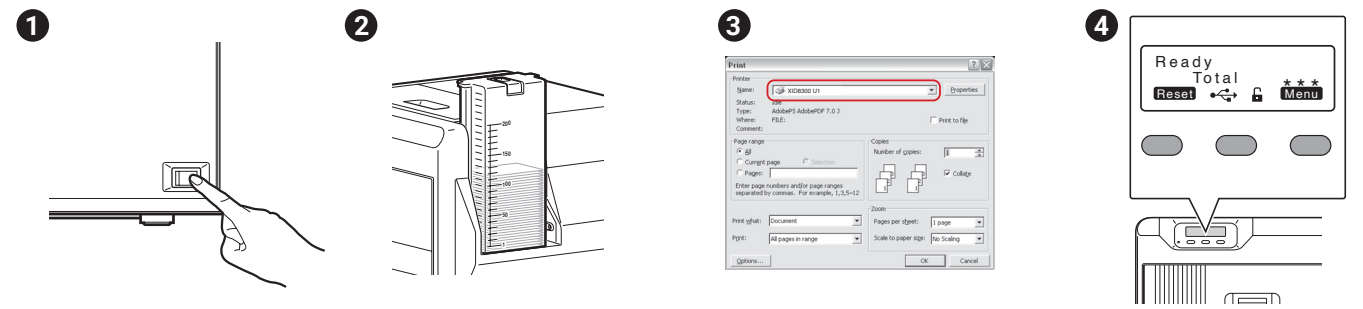
### Download and install driver

- Follow the online step-by-step guide to download and install the printer driver.



## Printing a card

XID8300



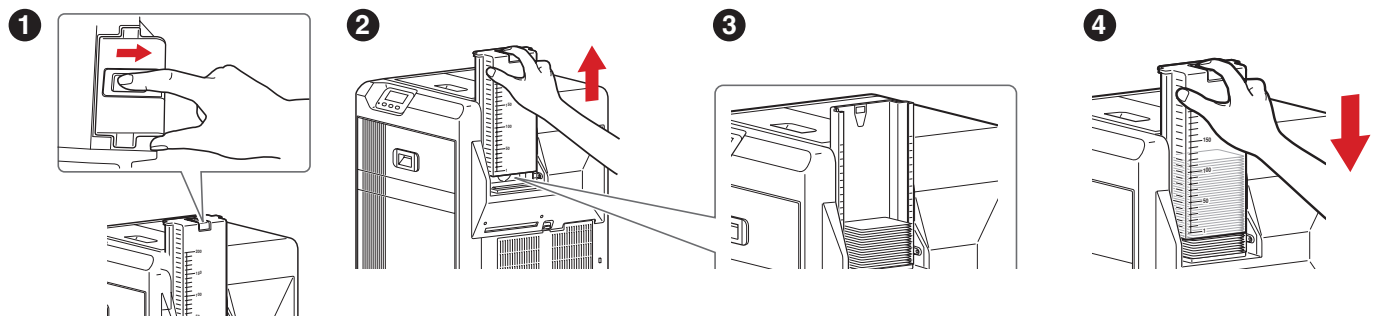
- Turn on the power.
- Check to ensure that cards are inserted into the card hopper.
- Open the software's print settings screen, and select this printer in **[Name]**.
- After ensuring that a **[Ready]** message appears on the LCD panel of the printer, start printing.

### Precautions

- If you see an **[Initializing..]** or **[Preheating..]** message on the LCD panel of the printer, this means the printer is not ready yet. Printing cannot be performed until a **[Ready]** message appears.
- Printing the card on the side with the magnetic stripe may cause printing errors or damage to the card's functions. If you want to do so, please consult our authorized dealers in advance.
- For printing using application software prepared by the user, refer to the instruction manual of the corresponding software.

## Loading cards

XID8300



- Set the card hopper knob to **[OPEN]**.
- Lift to remove the card hopper cover.
- Align the orientation of the cards, and set them in the printer.
- Install the card hopper cover, and set the card hopper knob to **[LOCK]**.

### Precautions

- If the security lock function is turned on, the card hopper will be locked. Turn off the function from the computer. After loading the card, turn on the function again from the computer.
- Do not touch the printing surface of the card. Touching it may cause printing errors. Put on the supplied gloves when handling the cards.
- To prevent card jams from occurring, limit the number of cards stored in the card hopper at any time to about 100 pieces regardless of the card thickness.
- When using new cards, set them after making sure that they are not adhered to each other due to static.
- Align the cards before setting them in the printer. Otherwise, the card hopper cover may not close properly, and this may damage the printer.