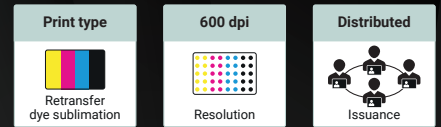


XID-M600



A major advance for high speed, high definition security printing



The XID-M600 combines **enhanced speed with high-definition security printing**, making it ideal for secure government distributed issuance programs such as National IDs or driving licenses.

Its 600dpi resolution printhead is optimized for complex graphical layouts including microtext and 1D, 2D and QR bar codes. Its retransfer printing technology enables vivid colors, full coverage of the card surface and the ability to print on smart cards and a range of card materials, including polycarbonate.

Built on Matica's brand new, proprietary, **next-generation retransfer printing engine**, the XID-M600 is Matica's **fastest retransfer printer** yet, with speeds of more than 150 color cards per hour achievable with no compromise on print quality. A **dual hopper version** of the printer is available, enabling users to issue two different card types on-demand - for example, a driving license and a vehicle registration card.

Lamination options are available thanks to full compatibility with the Matica MC-L2 laminator.

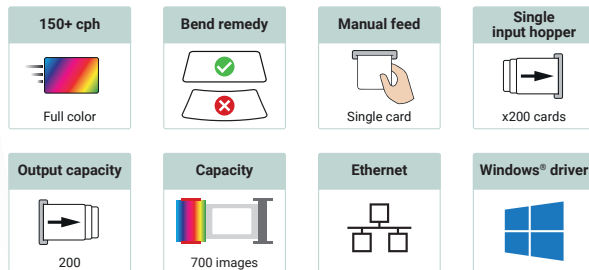
■ XID-M600 delivers...

- ▶ High definition over-the-edge 600dpi printing
- ▶ More than 150 color cards per hour
- ▶ Versatility - including dual hopper version, multiple encoding and lamination options
- ▶ Robust, reliable build quality
- ▶ Extensive consumables program, including secure ribbons
- ▶ 3 years warranty (lifetime printhead cover*)

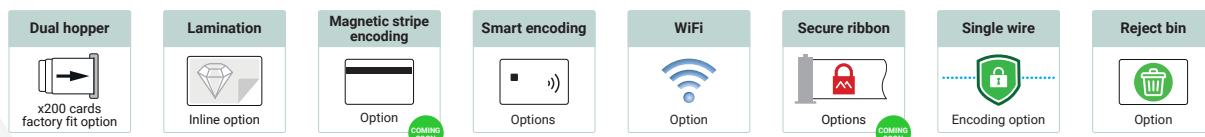
■ Ideal for

- ▶ Secure ID projects and government distributed issuance programs
- ▶ Complex graphical layouts including microtext and 1D, 2D and QR barcodes
- ▶ High quality printing on to smart cards and diverse card substrates
- ▶ Mid to high volume card issuance

Standard features



Optional features



XID-M600

Printer specifications

Print technology

Dye-sublimation, retransfer

Print resolution

600dpi

Print area

56 x 88mm over-the-edge (CR-80 cards)

Print speed

More than 150 cph (YMCK, single-side, batch)

Print mode

Dual-sided

Communications interface

- USB 2.0
- Ethernet 10BaseT, 100BaseT

Easy to use, plug and print operation

- LCD touchscreen panel
- Easy handling ribbon cassettes
- Automatic ribbon identification and setting

Printer dimensions (HxWxD) / Weight

351 x 428 x 279mm (13.8 x 16.8 x 11")
16.6kg (36.6lb)

Standard printer security

Support for Kensington® security lock

Power supply

- 220-240V/110-115V, 50-60 Hz
- Standby mode and reduced power consumption

Operating environment

- Temperature: 15°C to 40°C, 59°F to 104°F
- Humidity: 20% - 65% (non-condensing)

Storage conditions

- Temperature: -5°C to 70°C, 23°F to 158°F
- Humidity: 20% to 70% (non-condensing)

Sound (ISO 7779)

Sound pressure less than 48dB (A)

Certifications

RoHS, CE, FCC, CQC, UL, WEEE,
Proposition 65 (California, USA)

Warranty

- 3 years (subject to the use of chromXpert® ribbons)
- Lifetime printhead cover*

Card specifications

Input hopper capacity

- 200 cards (0.76 mm / 30 mil thickness)
- Single card manual feeding

Output hopper capacity

200 cards

Card thickness

0.25 mm - 1.25 mm / 10 mil - 50 mil

Card types

PVC, PVC Comp, PET/G/F/IX, ABS, PC

Software specifications

XPS printer driver

Windows® (32/64bit) 7, 8.1, 10, 11, Server 2012, 2016, 2019, 2022.

Card design and issuance software

Card Exchange Producer - Go edition.

Integration tools

- EDIsecure® middleware
- SDK available for system integrators

Options

Communications interface

- Single wire encoding
- WiFi (802.11 a/b/g)

Dual input hopper

Extra 200 cards (factory upgrade only)

Smart card / Contactless encoding

- Contact PC/SC, EMV compliant
- Smart contact station: ISO 7816-2
- ISO14443A, B, ISO15693, MIFARE®, DESFire®, HID iClass®

Magnetic stripe encoding (coming soon)

ISO 7811 HiCo/LoCo, JIS2

Inline lamination

Single or dual-side



Reject bin option

100 cards

Dual-side activation license

Field upgradable from single to dual-sided printing



Consumables chromXpert

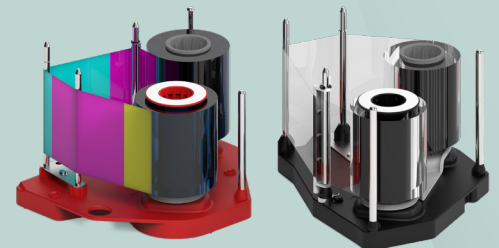
- To ensure print quality and card durability, printhead lifespan and overall printer reliability, use chromXpert ribbons only.
- Supply cores and cassettes are recyclable. Packaging is recycled.

ChromXpert™ ribbon program

• YMCK (700 prints)	PR24019109
• Retransfer film (700 prints)	PR24019219
Cleaning kit	PR24000601

COMING SOON

• YMCKK (550 prints)	Coming soon
• YMCKUv (550 prints)	Coming soon
• YMCKSc (550 prints)	Coming soon
• YMCKPo (550 prints)	Coming soon
• Monochrome K	Coming soon
• Monochrome White	Coming soon



* Warranty subject to strict compliance with specific usage and maintenance conditions and use of ChromXpert consumables. Lifetime printhead warranty subject to maximum number of passes, see warranty document for more information.



Global offices

Europe: Switzerland HQ, Italy

Asia: Malaysia, India

USA: South Carolina HQ, Minneapolis

Middle East: Dubai



Authorized reseller / System integrator

XID-M600 Datasheet A4 UK V3

Data subject to change without notice.
All trademarks stated are the property of their respective owners.